

# Let's put territoriality on the map

Nicolas Garnier, Alexandra Kulmer, Stoyan Kanatov, Baiba Liepa, Pieter Louwers, Daniela Minichberger, Besiana Ninka, Marko Ruokangas, Kelly Zielniewski | Interact | 28.05.2025

**Interact**



**Co-funded by  
the European Union**  
Interreg

# Agenda

01

**Inspirational  
speech**

02

**Let's put  
territoriality  
on the map**

03

**Territorial  
instruments  
in Cohesion  
Policy:  
experiences  
and lessons  
so far**

04

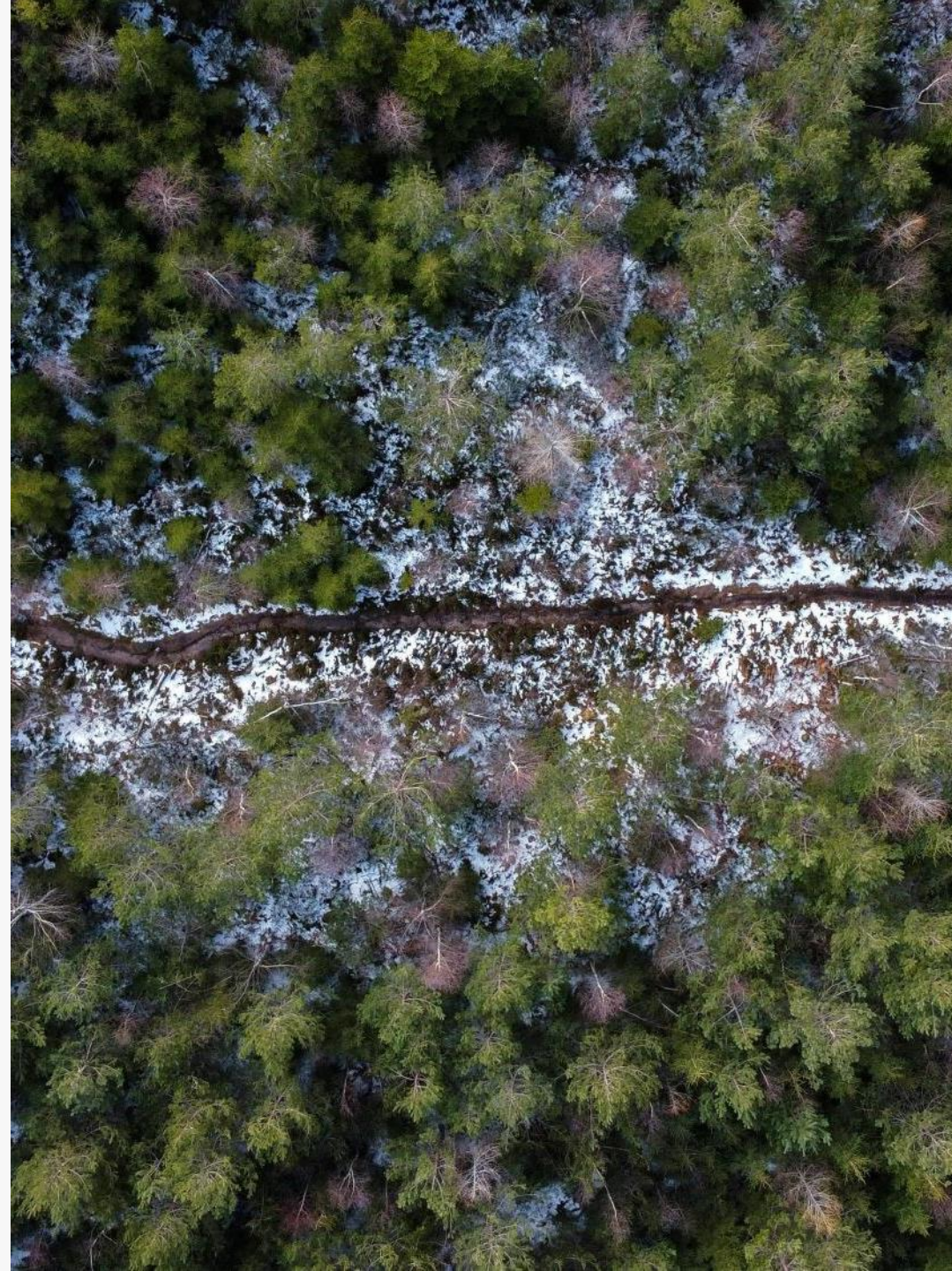
**TA2030 and  
territoriality**

05

**Territoriality  
Post27**

# Objectives

- Highlight the importance of cross-border, place-based cooperation beyond administrative boundaries
- Examine practical use of territorial tools in Interreg (e.g. CLLD, PO5, TIA, SPF, etc.)
- Assess effectiveness and identify areas for simplification and improvement
- Explore additional innovative territorial tools of Interreg programmes
- Contribute to shaping the Post-2027 Interreg policy debate on territoriality



# Territoriality

Pieter

## Cross cutting/horizontal themes

PO5

Daniela  
Stoyan  
Besiana

ISO1

Kelly

MRS/SBS

Baiba  
Ilze

TA 2030

Marko

CLLD

Ivana  
Besiana

SPF

Grzegorz  
Alexandra  
Nicolas

SSP

Grzegorz  
Alexandra  
Nicolas

P2P

Besiana  
Daniela  
Valeria

EGTC

Jelena  
Ivana

TIA

Daniela  
Besiana



# Inspirational speech

***Moray GILLAND, Head of Macro-regions,  
Transnational/Interregional/External  
Cooperation, Enlargement, Unit D1***





# Let's put territoriality on the map

*Group exercise: world café*

# Let's put territoriality on the map

**This session/group exercise aims to**

- Map how Interreg programmes implement territoriality in practice
- Identify gaps and needs beyond regulatory frameworks
- Evaluate tools/instruments/frameworks in use
- Exchange ideas to improve territorial cooperation

# World café exercise



## Territorial pitches

PO5, ISO1, Transnational,  
CLLD, MRS/SBS, SSP/SPF,  
Emerging Tools



## World café discussions

3 rounds of 20 min



## Feedback of the different topics/corners

# Introduction to the corners

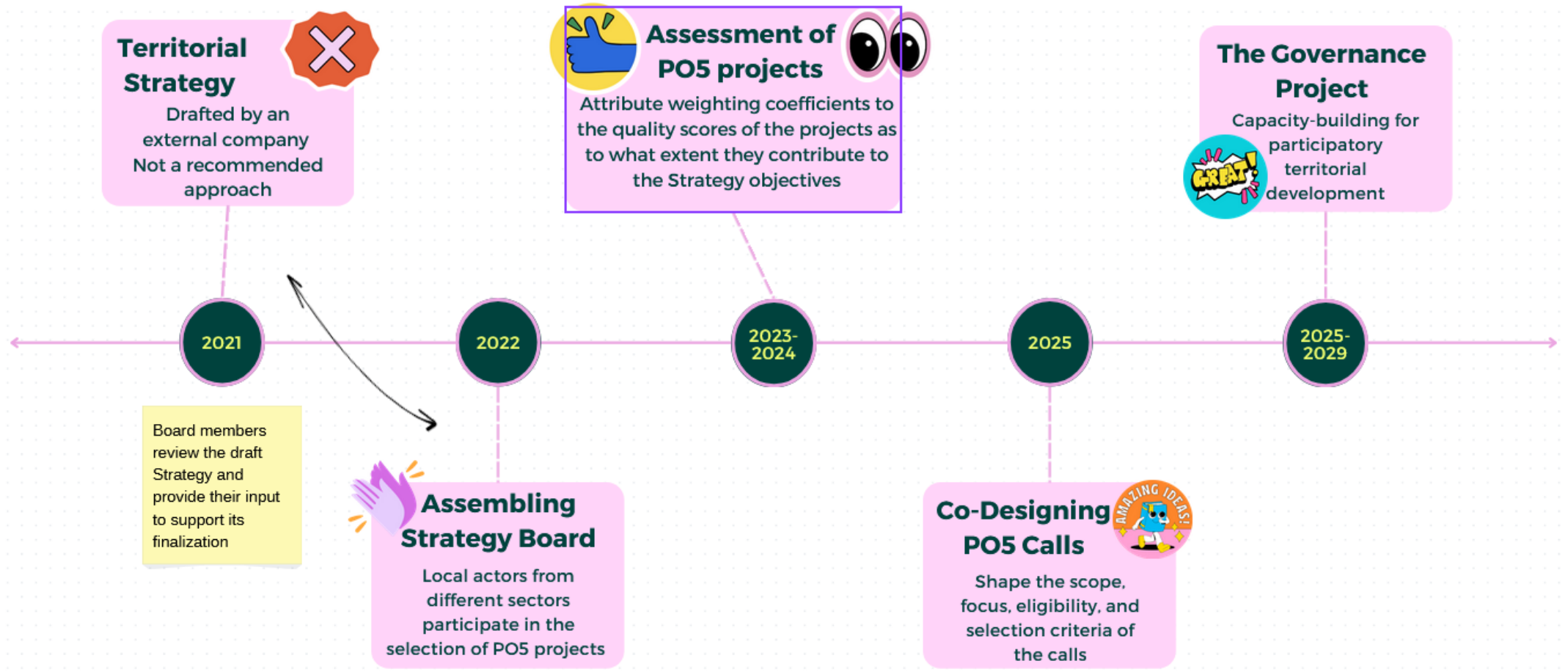


- PO5: Desislava Tencheva (Interreg IPA BG-RS, IPA BG-TR, IPA BG-RMN)
- ISO1: Anna Sirocco (Interreg Central Europe)
- Transnational (TN): Sina Redlich (BBSR)
- CLLD: Martha Gaerber (Interreg Italy – Austria)
- MRS & SBS: Baiba Liepa (Interact)
- SSP & SPF: Alexandra Kulmer (Interact)
- Other/Emerging Tools: Mariane Bloudeau (AEBR)

# The evolution of PO5

Promotion of Integrated Territorial Development within three Interreg IPA programmes: Bulgaria-Serbia, Bulgaria -North Macedonia and Bulgaria-Türkiye

## Local actors transition from advisors to co-programmers



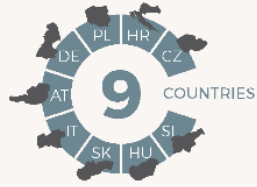


# ISO1 in Interreg CENTRAL EUROPE



# INTERREG COOPERATION IS CENTRAL

Interreg CENTRAL EUROPE is a European Union funding programme that supports transnational cooperation. We fund projects that make central Europe more resilient to challenges that know no borders and cannot be solved alone. For more than 25 years, we have been bringing regions together beyond borders to find fitting solutions for their citizens - in a fair and equal way everywhere. [www.interreg-central.eu](http://www.interreg-central.eu)



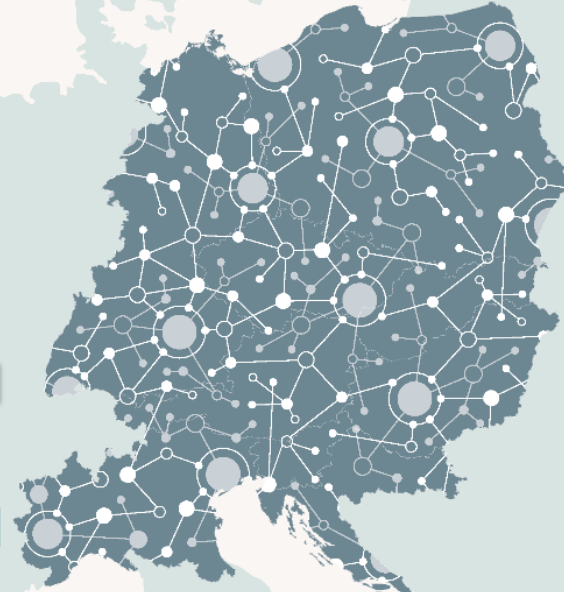
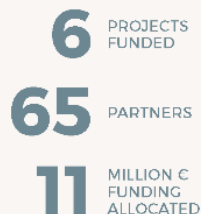
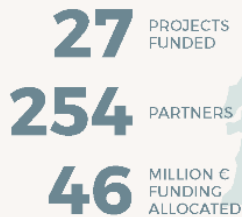
## PROGRAMME DURATION



## BUDGET



## OUR PROJECTS PER PRIORITY



EXPLORE OUR PROJECTS AT PROJECT GATEWAY FOR MORE INSIGHTS!  
<https://www.interreg-central.eu/project-gateway>

PUBLISHED JUNE 2024

## ISO1 in Interreg CE:

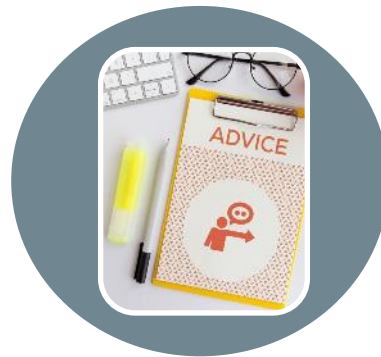
- One of four priorities
- No dedicated calls
- Clear focus on governance and integrated territorial development

# How did we introduce this to our applicants?

**Many examples of actions in IP + Support measures**



Thematic video  
explainers



Individual  
consultations



Q&A webinars

**CALL 1:**  
18 project proposals ➡ 6 projects funded

**CALL 2:**  
15 project proposals ➡ 3 projects funded

**CALL 3:**  
44 project proposals

## PROJECTS

3P4SSE | BorderLabs CE | CE-Spaces4All | Central Mountains | EnCLOD | GINEVRA | GEtCoheSive | GOV4PeaCE | MECOG-CE

### THEMATIC FIELDS COVERED AFTER TWO CALLS

- Reduction of administrative barriers, better policymaking and cooperation beyond borders
- Multi-level and multi-sector governance among areas with functional ties beyond borders
- Integrated territorial development strategies
- Participatory decision-making processes
- Digital governance



**9**

Projects



**19,2** Mio. Euro

Total Budget



**30**

Strategies



**97**

Partners



**39**

Pilot Actions



**43**

Solutions

# PROJECTS EXAMPLES



**GEtCoheSive**

**Engaging citizens to improve policies**

Increasing the capacity of public authorities to engage citizens with a vulnerable background, by using participatory approaches for better access to care services and environmental policies.



**MECOG-CE**

**Strengthening metropolitan governance**

Enhancing metropolitan cooperation and governance in eight central European metropolitan areas, through sharing best practice and developing specific tools following an integrated approach.

# INTEREST DRIVERS

- Testing of integrated approaches linking different sectors, beyond administrative boundaries
- Applying multi-sectoral governance processes to address complex challenges (e.g. digitalisation, demographic change, climate change, public services of general interest etc.)
- Using participatory approaches as a key element for good governance, bringing policy-making closer to stakeholders and citizens.



# TAKEAWAYS

ISO1 is highly relevant for Interreg:

- improved cooperation - across borders and across governance levels
- better governance - and closer to citizens
- territoriality
- cross-sectoral/integrated approaches



**Interreg**  
CENTRAL EUROPE



Co-funded by  
the European Union



Anna Sirocco  
Interreg CENTRAL EUROPE Programme



[www.interreg-central.eu](http://www.interreg-central.eu)



[sirocco@interreg-central.eu](mailto:sirocco@interreg-central.eu)



+43 1 8908088-2404



[Facebook.com/InterregCE](https://Facebook.com/InterregCE)



[Linkedin.com/company/interregce](https://Linkedin.com/company/interregce)



[Youtube.com/c/interregcentraleurope](https://Youtube.com/c/interregcentraleurope)



[Instagram.com/interregce](https://Instagram.com/interregce)





Federal Institute for  
Research on Building,  
Urban Affairs and  
Spatial Development  
within the Federal Office for  
Building and Regional Planning



BBSR-Analysen KOMPAKT 12/2024

### European cooperation of rural and economically weaker regions

Climate adaptation, sustainable redevelopment, mobility in rural areas: When German municipalities and regions cooperate with European partners, an inspiring exchange of knowledge often takes place. Rural and economically weaker regions in particular benefit from this exchange but face difficulties, as their capacities for project work are limited.

Interreg II, a European funding programme, enables transnational cooperations, for example in the Alpine Space Programme or Baltic Sea Region. This paper investigates for the period 2009-2020 how Interreg II programmes integrate rural and economically weaker regions into European cooperation. It analyses whether transnational programmes, due to their geographical focus, offer better opportunities for participation in these regions, compared to the Europe-wide programmes "Interreg Europe", "Horizon 2020" and "Interregional Innovation Investments" (II).

The analysis indicates that rural and economically weaker regions are more involved in Interreg programmes than in excellence-focused programmes such as "Horizon" and II. Differences between transnational and interregional Interreg programmes show that transnational programmes can respond better to policy priorities. However, some Interreg II programmes do not fully utilise the potential to increase the involvement of rural regions. In future, these programmes should increasingly focus on spatially inclusive cooperation.

by  
Dr. Philipp Garais  
Jule Krolikowski  
Jens Kurnol  
Sina Redlich

# EUROPEAN COOPERATION OF RURAL AND ECONOMICALLY WEAKER REGIONS

SINA REDLICH

28 May 2025

# WHAT WE THOUGHT INITIALLY TRUE OR FALSE?

- **INTERREG IS MORE SPATIALLY INCLUSIVE THAN OTHER PROGRAMMES**
- Yes, there are more rural and economically weaker regions taking part in Interreg than in Horizon and I 3
- **TRANSNATIONAL PROGRAMMES ARE MORE INCLUSIVE THAN EUROPEAN-WIDE PROGRAMMES**
- **YES, AND INTERREG EUROPE IS DOING WELL, TOO.**
- **INVOLVEMENT OF RURAL REGIONS IN INTERREG B HAS DECREASED OVER TIME**
- **YES, BUT INCREASED AGAIN AFTER 2014.**



# OPTIONS FOR TRANSNATIONAL PROGRAMMES TO BECOME MORE TERRITORIALY INCLUSIVE

- **DISCUSSING: FUNDING EXCELLENCE VS. COOPERATION FOR ALL REGIONS?**
- **ANALYSING: WHERE DOES THE FUNDING CONCENTRATE**
- **PROGRAMME DESIGN: OFFERING TOPICS, CALLS AND PROJECT FORMATS ACCESSIBLE TO LOWER CAPACITY ORGANISATIONS**
- **REACHING OUT: ADRESSING ANCHOR ORGANISATION IN AREAS WITH LOW PARTICIPATION**
- **REACHING OUT: ESTABLISHING SUB-REGIONAL CONTACT POINTS**
- **REQUIRE PARTNERSHIPS TO INVOLVE PARTNERS FROM NEW AREAS**
- **CAPITALISATION: REQUIREMENT TO TRANSFER SOLUTIONS TO NEW AREAS IN THE PROGRAMME**
- **EARMARKING: FUNDING FOR ALL TYPES OF REGIONS**



Interreg VI–A Italia–Österreich  
Kooperationsprogramm  
Programma di cooperazione

CROSS-BORDER  
COOPERATION PROGRAMME  
Interreg VI-A  
Italy-Austria 2021-2027-  
CLLD: Community-Led Local Development

**Interreg**  
Italia–Österreich



Co-funded by  
the European Union

Europa noch näher  
Un'Europa più vicina

# I nostri progetti superano i confini



# Unsere Projekte überwinden Grenzen

Interreg VI-A Italia-Österreich  
Kooperationsprogramm  
Programma di cooperazione

1  
INNOVATION UND  
UNTERNEHMEN  
INNOVAZIONE E IMPRESE



2  
CAMBIAMENTO CLIMATICO  
E BIODIVERSITÀ  
KLIMAWANDEL  
UND BIODIVERSITÄT

3  
NACHHALTIGER TOURISMUS  
UND KULTURTOURISMUS  
TURISMO SOSTENIBILE  
E CULTURALE



4  
SVILUPPO LOCALE  
LOKALE ENTWICKLUNG  
*Community-Led Local Development (CLLD)*

5  
ABBAU VON  
GRENZÜBERSCHREITENDEN  
HINDERNISSEN  
RIDUZIONE DEGLI OSTACOLI  
TRANSFRONTALIERI



# Europa noch näher

Community-Led Local  
Development (CLLD)



# Un'Europa più vicina

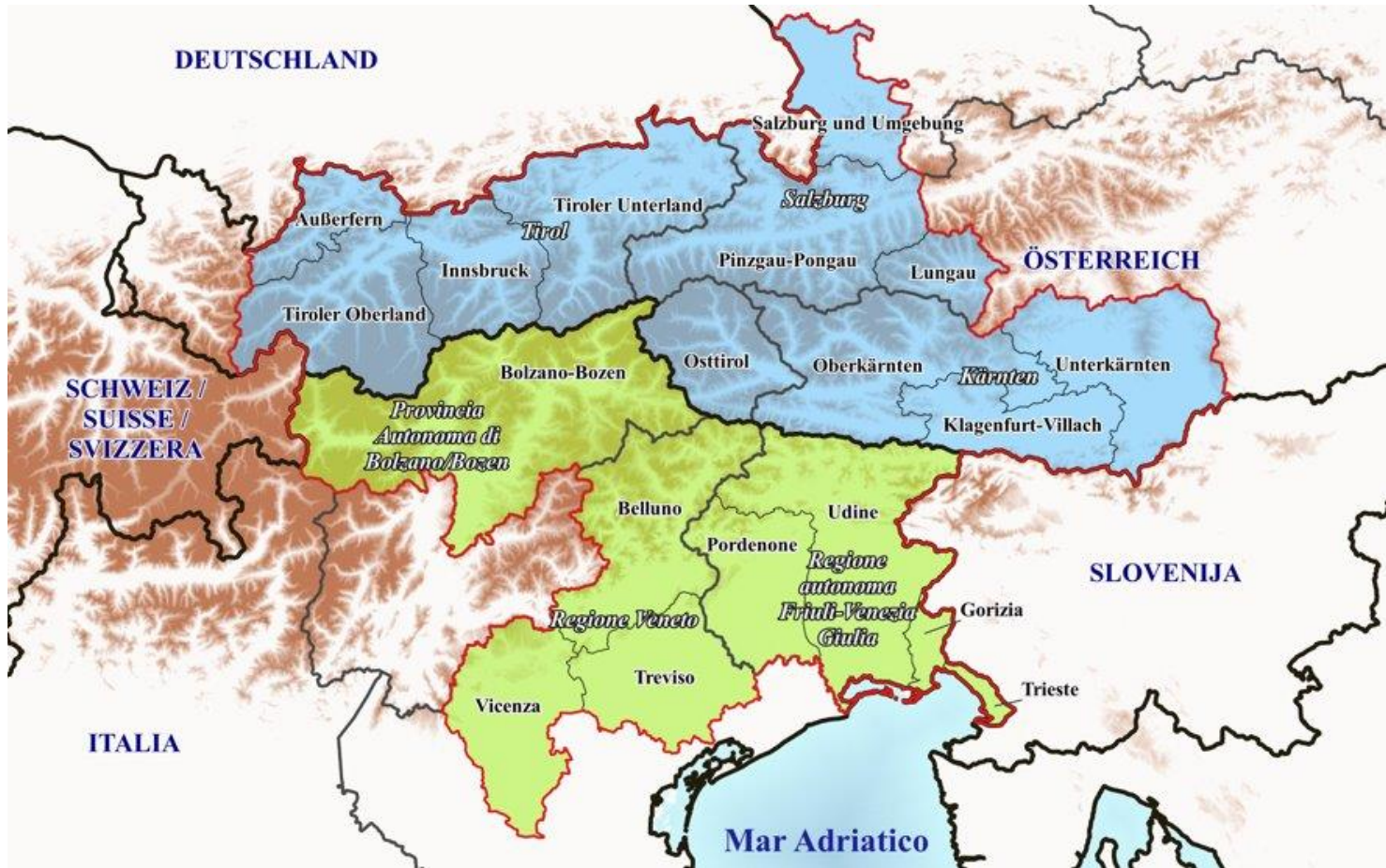
Community-Led Local Development  
Transfrontaliero (CLLD)

Interreg  
Italia-Österreich



Co-funded by  
the European Union

# PROGRAMME AREA: 6 partner regions

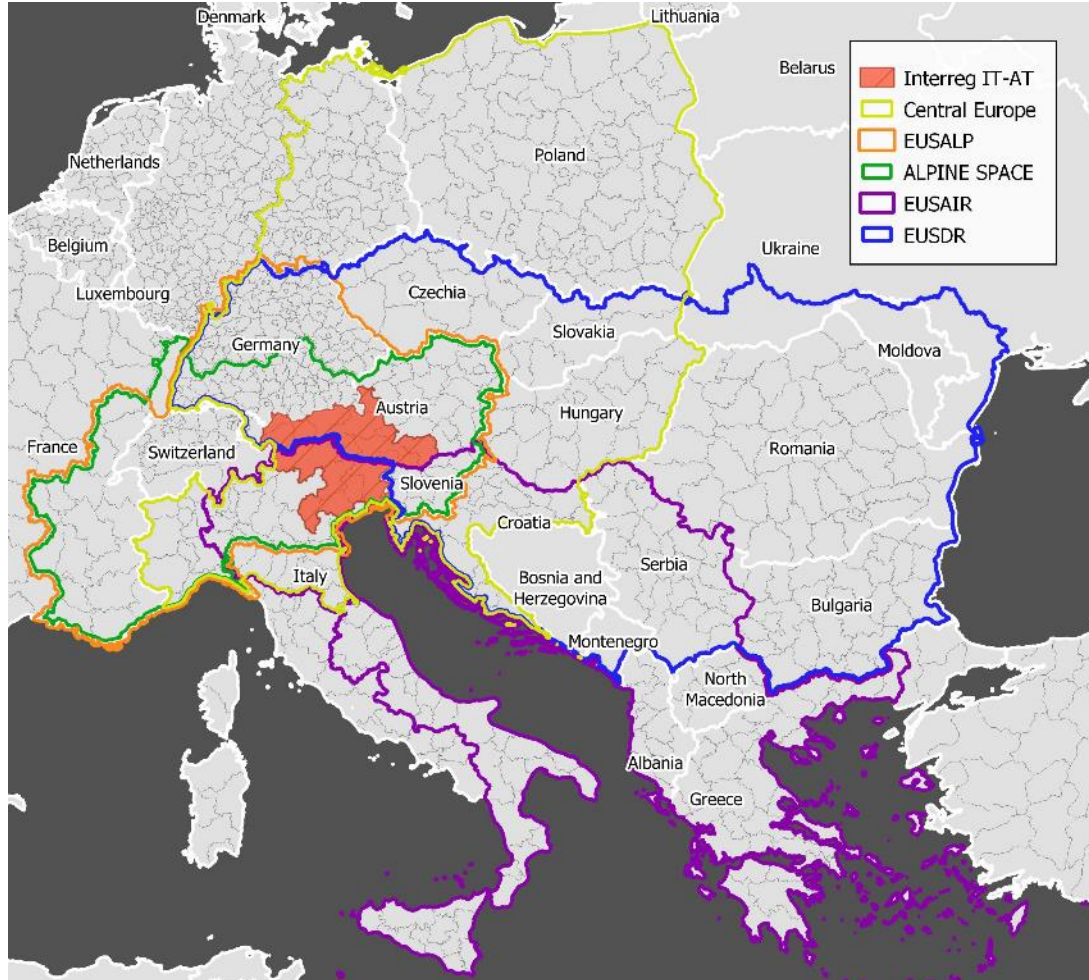


- **5,5 million** people (in 2022)

- **50.000 km<sup>2</sup>** covered area

- **430 km** of border

# THE PROGRAMME AREA AND SYNERGIES WITH OTHER INTERREG PROGRAMMES AND MACRO REGIONAL STRATEGIES



**EUSALP** EU STRATEGY FOR THE ALPINE REGION



**Interreg  
Alpine Space**

**Interreg**

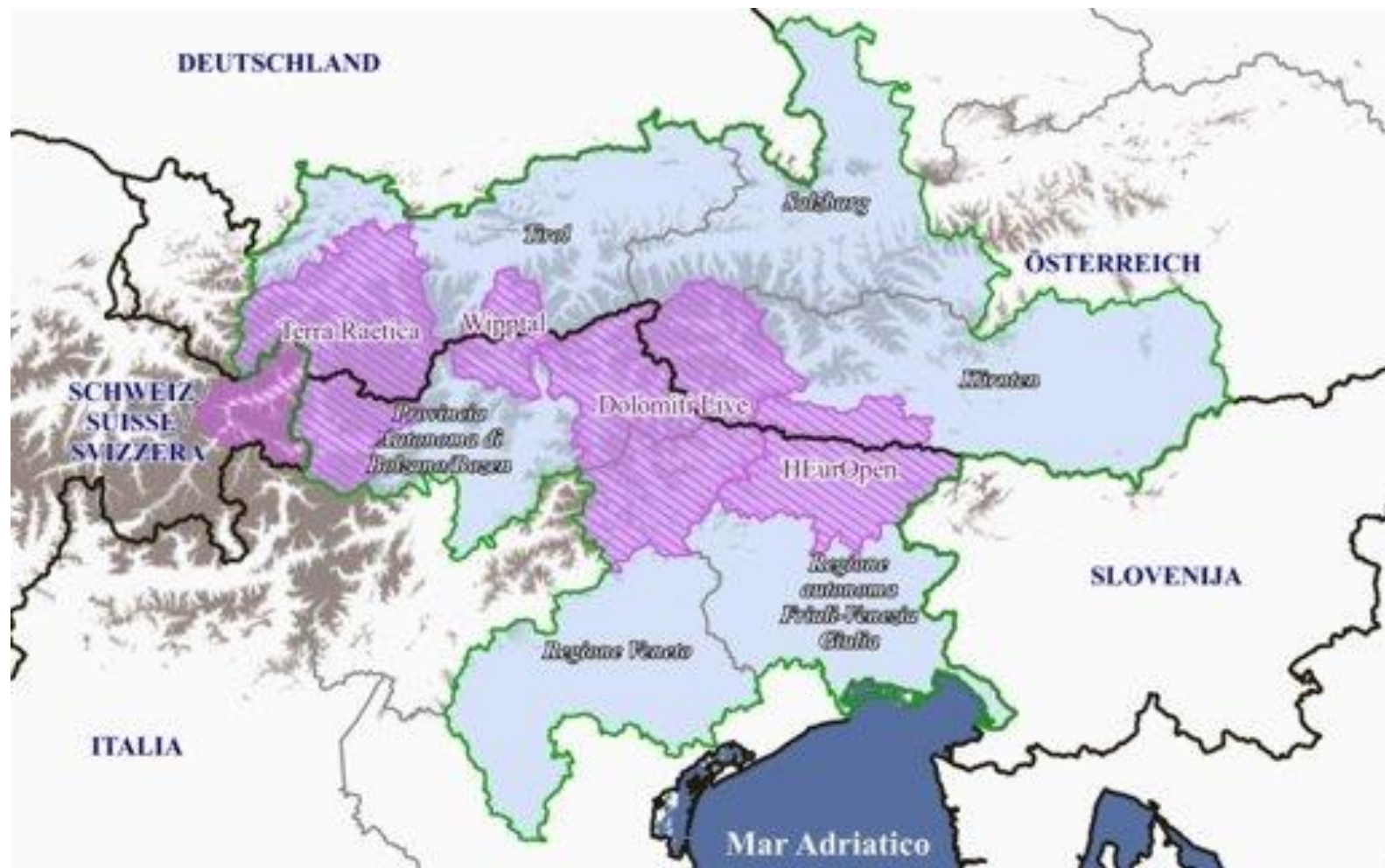


Co-funded by  
the European Union

**Alpine Space**



# The programme within the programme: CLLD areas

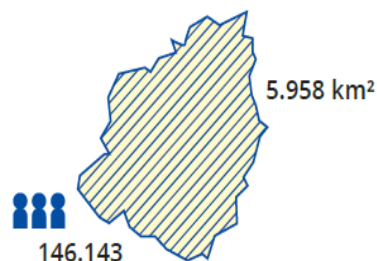


# CLLD AREAS: local development strategies

1

## TERRA RAETICA

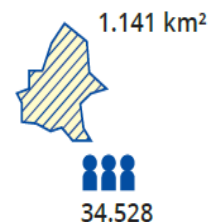
LAGS: RegioL (Landeck),  
Imst, Vinschgau, Engiadina  
Bassa (Nationalparkregion Schweiz)



2

## WIPPTAL

LAGS: Wipptal Tirol,  
Wipptal Südtirol



3

## DOLOMITI LIVE

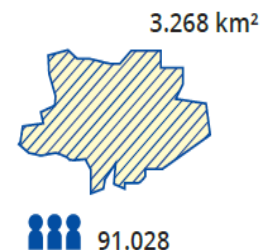
LAGS: Osttirol,  
Pustertal, Belluno








4

## HEUROPEN

LAGS: Hermagor,  
Euroleader (Carnia),  
Open Leader (Gemonese,  
Canal des Ferro e Val Canale)



# FINANCIAL RESOURCES BY PRIORITY

<u>Priority</u>	2014-2020	2021-2027
 <b>1. INNOVATION AND ENTREPRENEURSHIP</b>	22.150.892,00 €	19.258.176,00 €
 <b>2. CLIMATE CHANGE AND BIODIVERSITY</b>	24.879.920,00 €	19.258.176,00 €
 <b>3. SUSTAINABLE TOURISM AND CULTURE</b>		9.014.472,00 €
 <b>4. LOCAL DEVELOPMENT - CLLD</b>	13.126.919,00 €	14.477.773,00 €
 <b>5. REDUCING CROSS-BORDER OBSTACLES</b>	17.146.804,00 €	6.282.812,00 €
<b>TOTAL ERDF</b>	77.304.535,00 €	68.291.409,00 €
Additional resources from national funds <i>Co-financing rate 20 %</i>	92.575.256,00 €	91.339.757,00 €

# Multilevel governance – participatory democracy

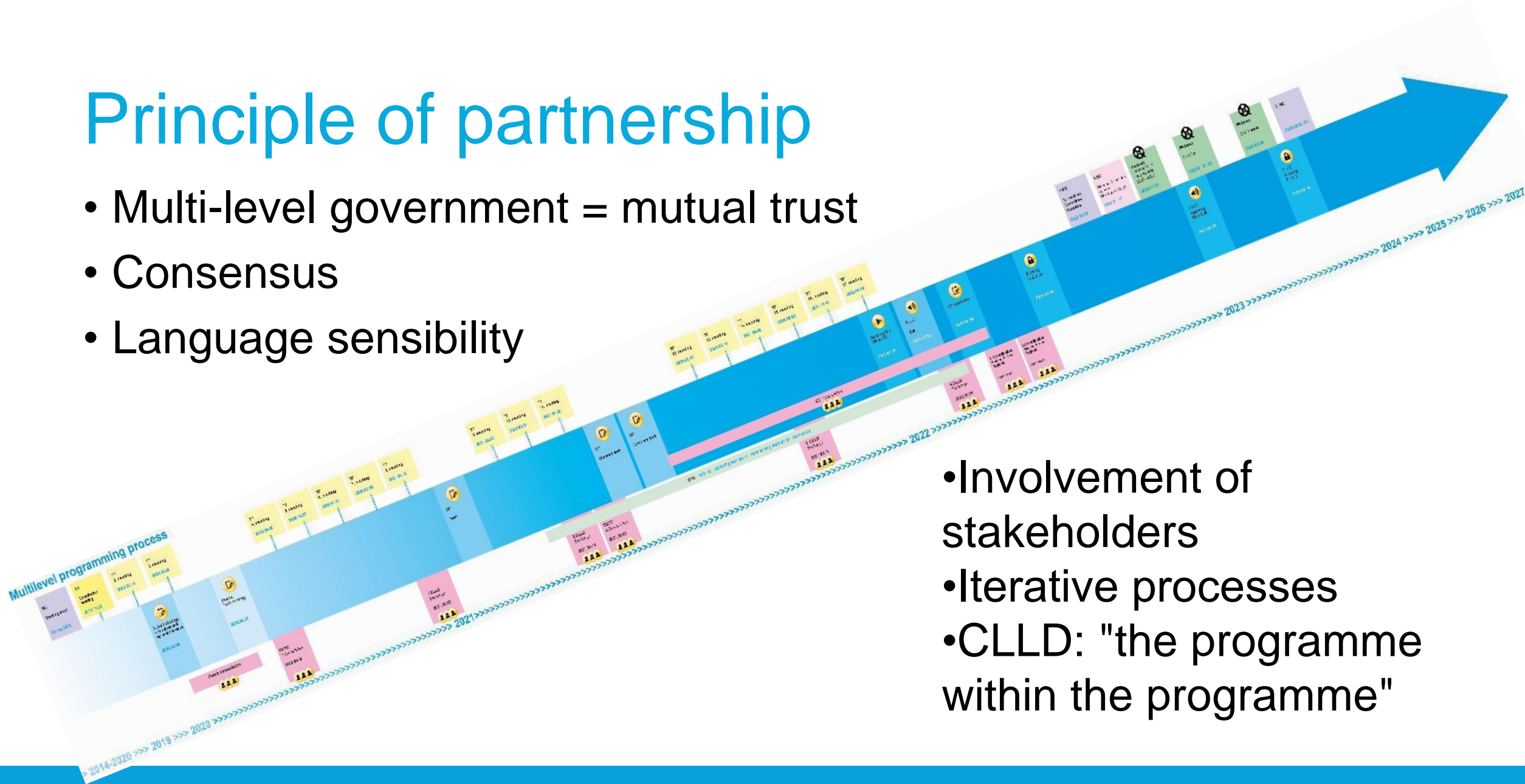
- Bottom-up: creating a cross—border identity



Governance between CBC  
CLLD and EGTC  
„Europaregion Tirol Südtirol  
Trentino“ + EGTC „Euregio  
Senza Confini“

# Principle of partnership

- Multi-level government = mutual trust
- Consensus
- Language sensibility



- Involvement of stakeholders
- Iterative processes
- CLLD: "the programme within the programme"

# LOCAL DEVELOPMENT - CLLD

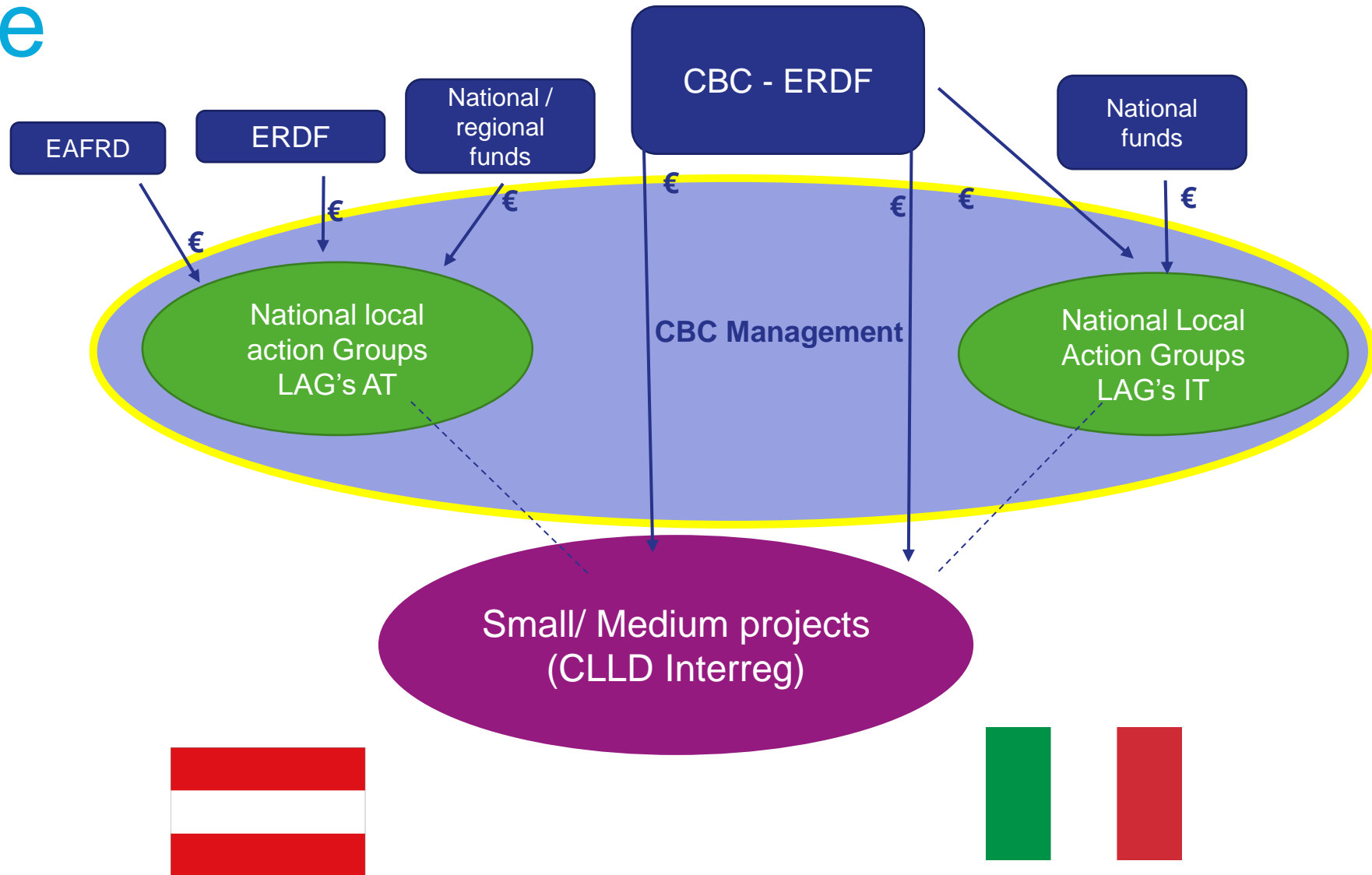
## 2014-2024: 10 YEARS OF EXPERIENCE

- Innovative approaches to local development: "*prioritising local knowledge to address local problems with local solutions*"
- LOCAL COMMUNITY BUILDING
- LIVING LABS - INNOVATION
- LOCAL EMPOWERMENT
- PARTICIPATION – BOTTOM UP
- NETWORK, MULTI-LEVEL-GOVERNANCE
- DEMOCRACY



© 2022, Ant action standing / stock.adobe.com

# Structure





Thank you for your attention  
[www.interreg.net](http://www.interreg.net)

Europe even closer

Europa noch näher  
Un'Europa più vicina

# Small-scale projects and Small project funds

- Exist for many years
- Definition of SPF in CPR Article 2(10) and legal requirements in Interreg Regulation Article 24 and 25
- 23 out of 28 Interreg programmes already set up 35 SPFs (4 programmes have several SPFs)
- SCOs and simplified implementation rules to attract smaller organisations, NGOs, citizens,... and create an impact on the ground

# Small-scale projects and Small project funds

- Collection of information through a survey by Spatial foresight conducting a study on Small projects for DG Regio
- Collection of good practice and identification of challenges, gaps and needs by Interact
- Foster exchange of experience between Programmes through an Interact networking event on SPF in autumn 2025

# Macro Regional Strategies & Sea Basin Strategies

Baiba Liepa

# What is *b-solutions*?



- **EU-funded initiative**, administered by the Association of European Border Regions (AEBR) since 2018
- Addresses **legal and administrative obstacles** hindering cross-border cooperation
- Supports local actors in border regions to tackle obstacles of a legal and/or administrative nature through **legal experts' support**
- Offers a technical assistance **complementary to Interreg** to help reduce border obstacles (ISO 1 « Better cooperation governance »)

# Call for new *b-solutions*' cases

**Goal :** Support 60 cases resolving border obstacles of a legal and/or administrative nature

**Target :** Public bodies in border regions (including public equivalent bodies); and Cross-border structures (Euroregions, European Groupings of Territorial Cooperation -EGTCs)

**Scope:** Border regions along EU internal land and maritime borders and along EU borders with EFTA and IPA countries

**Themes:** Institutional cooperation, Labour markets and education, Public services and European Green Deal



# What do participants obtain from *b-solutions*?

- A full **report** with a tailored analysis of the specific obstacle faced in the region, and proposals for concrete solutions
- Participation in a compendium illustrating a variety of obstacles and possible solutions to enhance cross-border cooperation

>> Support to:

- **Evidence:** Demonstrate the cross-border obstacles they face
- **Progress:** Move towards solutions
- **Capacity building:** Raise awareness of cross-border cooperation
- **Knowledge:** Be part of a European project to bring European integration forward



# Questions for the topics/corners

- What was your rationale to select this territorial tool/instrument/ framework?
- How could the instrument/tool be tweaked/changed for your easier application?



# Coffee Break

# Feedback from the corner discussions

- Main insights, highlights, and standout ideas
- Identify questions or messages to carry into the afternoon for the policy discussions





# Territorial instruments in Cohesion Policy: experiences and lessons so far

*Stefan Kah, European Policies Research  
Centre, University of Strathclyde*





# Territorial instruments in Cohesion Policy: experiences and lessons so far

**Stefan Kah**

Interact event “Let’s put territoriality on the map”  
Vienna, 28 May 2025



- Research institute founded 1978, 19 staff + associates
- 2 entities: Glasgow (University of Strathclyde) and Delft (TU Delft)
- Comparative research on regional and local development policies
- Research, knowledge exchange & policy advice for national governments & sub-national authorities
- E.g. *ex-post evaluation of territorial instruments - forthcoming*



# THE PLACE-BASED CONCEPT

## According to the 2009 Barca Report\*

1. a **long-term development strategy** whose objective is to reduce persistent inefficiency... and inequality (share of people below a given standard of well-being and/or extent of interpersonal disparities) in specific places
2. through the production of **bundles of integrated, place-tailored public goods and services**, designed and implemented by eliciting and aggregating local preferences and knowledge through participatory political institutions, and by establishing linkages with other places
3. promoted from outside the place by **a system of multilevel governance** where grants subject to conditionalities on both objectives and institutions are transferred from higher to lower levels of government

\* Barca F (2009) An Agenda for a reformed Cohesion policy – A place-based approach to meeting European Union challenges and expectations

# TERRITORIAL INSTRUMENTS

**Place-based concept operationalised** through “territorial development mechanisms”

Regulations distinguished 5 such mechanisms in 2014-20:



Instrument	Legal basis
<b>Integrated Territorial Investment (ITI) - urban</b> Use of ITIs for implementation of the 5% of the national ERDF allocation that must be allocated for integrated and SUD strategies.	Art. 36 CPR Art. 7 ERDF
Other integrated approach to SUD - dedicated <b>Priority Axes</b> or entire <b>Operational Programmes</b> . Use of these for implementation of the 5% of the national ERDF allocation that must be allocated for integrated and SUD strategies.	Art. 7 ERDF
<b>Integrated Territorial Investment (ITI) - other than urban</b> Use of ITIs outside of the 5% SUD ERDF earmarking.	Art. 36 CPR
<b>Community-led Local Development</b> Single tool for local initiatives funded by up to four ESI Funds (ERDF, ESF, EAFRD, EMFF).	Art. 32-25 CPR

# MINIMUM REQUIREMENTS FOR TERRITORIAL INSTRUMENTS



Source: Onaca G (2024)

# TERRITORIAL INSTRUMENTS IN 2014-20

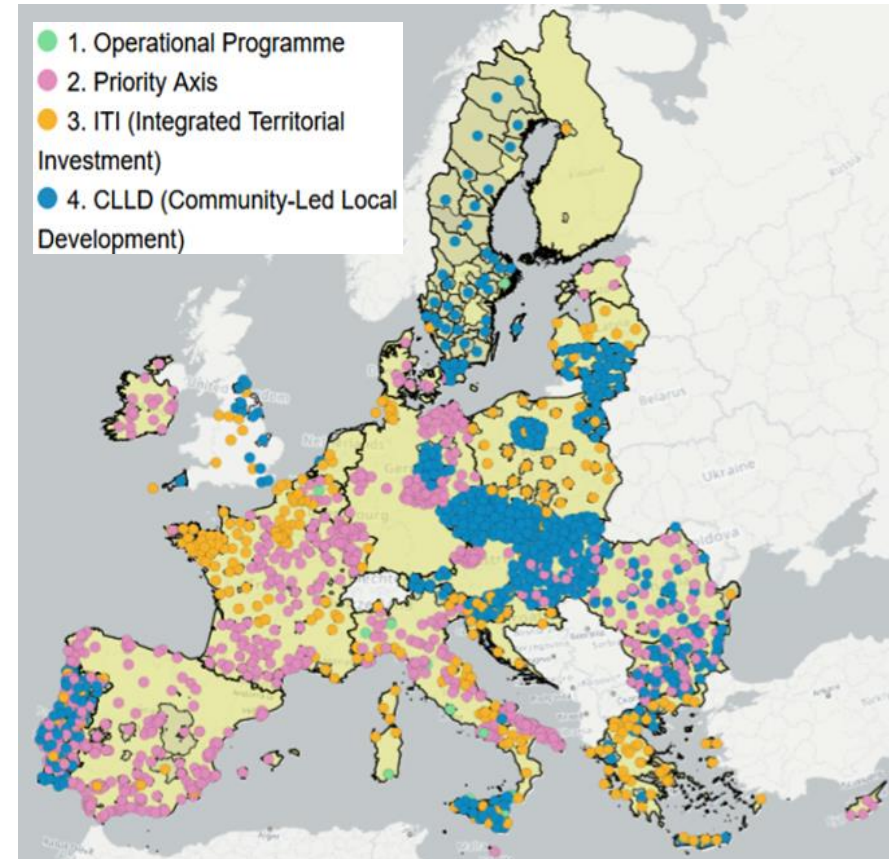
## *Key elements*

**Compulsory**: minimum **allocation** of 5% ERDF for urban development

**Optional**: **new tools ITI** (Integrated Territorial Investments) & **CLLD** (Community-led Local Development)

## *Uptake*

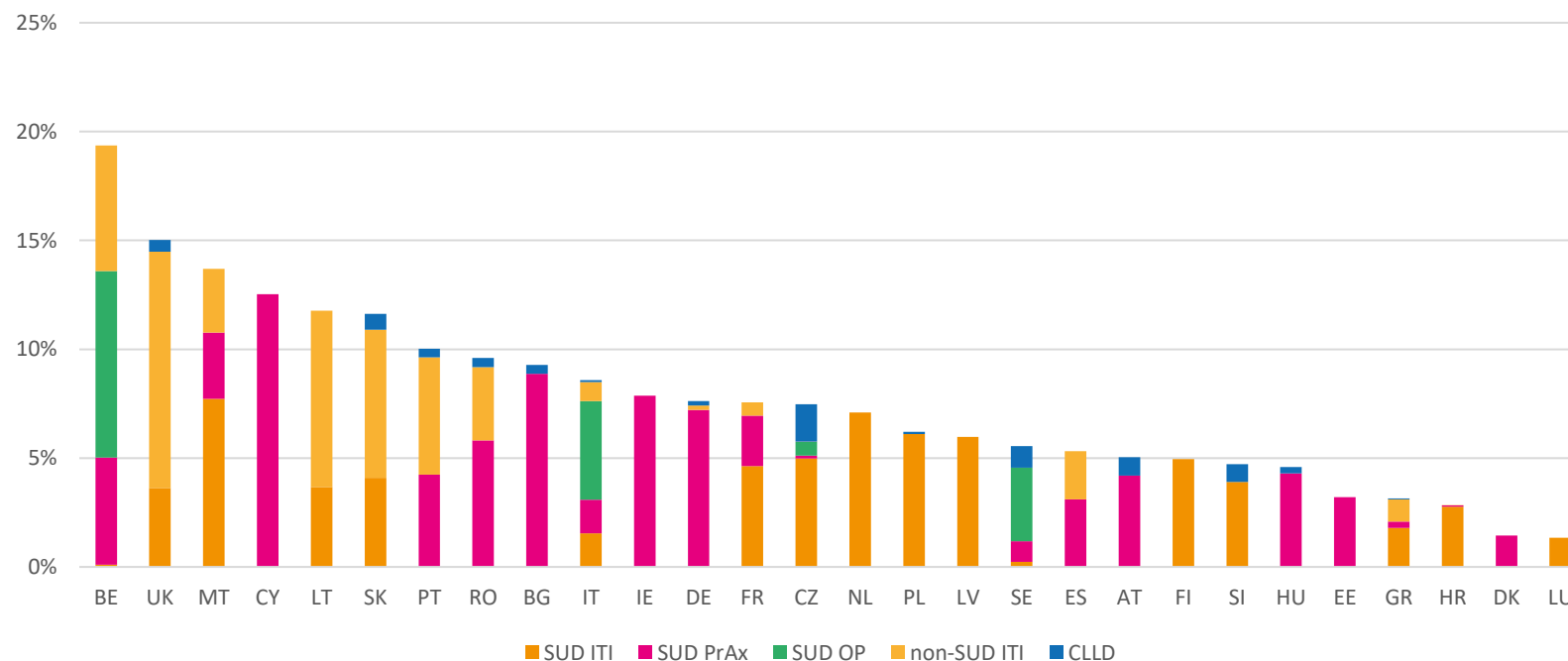
- **€28.8 billion** Cohesion Policy funding implemented through territorial instruments
- **1,971 territorial instruments** funded
- Diverse uptake – see map & next slide



Source: JRC [STRAT-Board](#)

# VARIED USE OF TERRITORIAL INSTRUMENTS IN 2014-20

## ERDF/CF funding allocated to instruments (% of total ERDF/CF per MS, 2014-20)

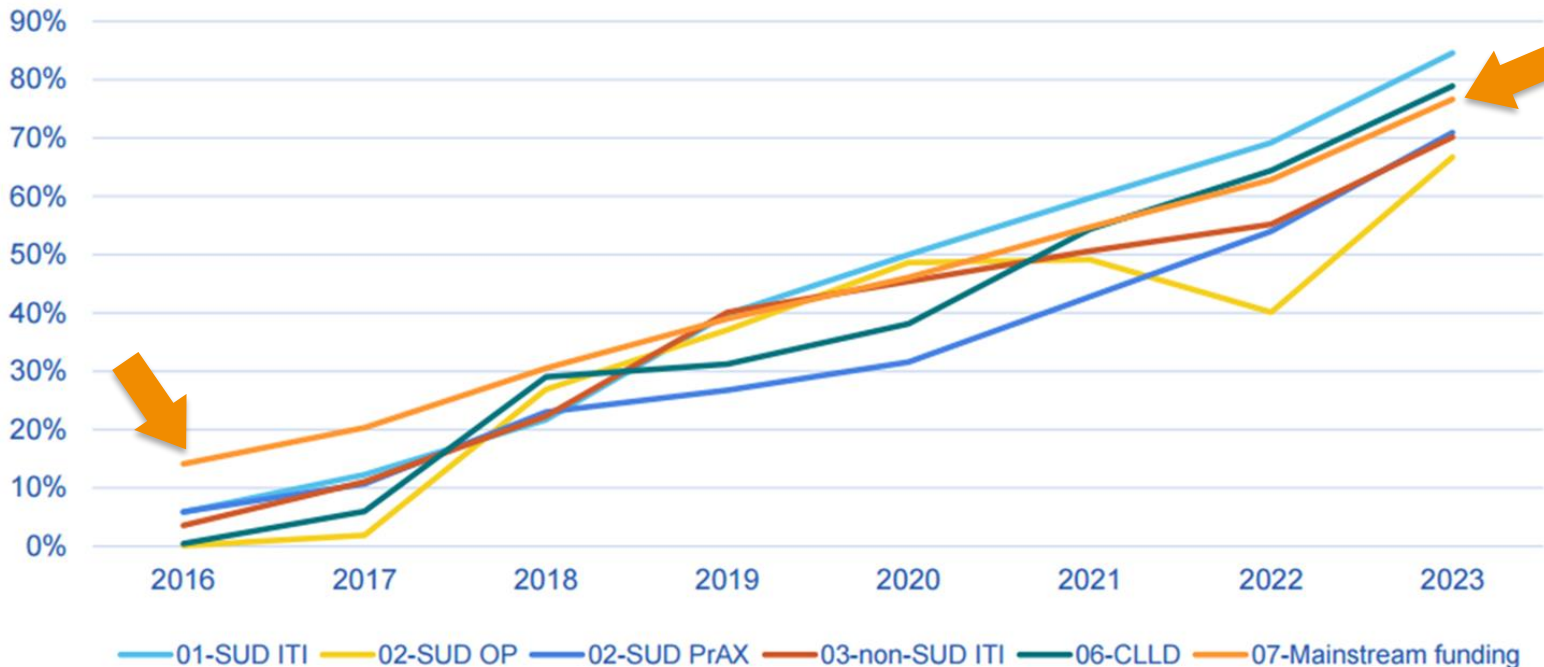


Source: Cohesion Open Data, 2014-20 categorisation dataset, variable "EU\_Eligible\_Costs\_Decided" (Reference date: 31/12/2022). Available at: <https://cohesiondata.ec.europa.eu/2014-2020-Categorisation/ESIF-2014-2020-categorisation-ERDF-ESF-CF-planned-/3kkx-ekfq>

# MS CONCERNS ABOUT USING TERRITORIAL INSTRUMENTS

Worries about additional complexity, voluntary character, audit issues, absorption delays – but see below...

Financial progress of TDM implementation (% total declared expenditures to decided (allocated to projects) expenditures)



Initial slow start of territorial instruments is typically recovered towards the end of the programme period



# TERRITORIAL DIMENSION IN 2021-27

**Policy Objective 5** dedicated to integrated territorial development (although other POs can be used)

Compulsory ERDF urban allocation **went up from 5% to 8%**

**Flexibility:** “other tools” can be domestically designed with integrated territorial strategies and local governance.

Allocation figures indicate c. **€40bn** CP funding channelled through territorial instruments.\*

## ITI

**Continued, often expanded** (CZ, PL, HR)

€23bn across 20 MS

Mostly functional urban areas and cities

## CLLD

Mix of **new** (RO, FR, EE), **continued** (BG, CZ, SI), **discontinued** (PT, SE, SK)

€ 1.6bn across 12 MS

Mostly in rural areas

## Other tools

€16bn across 19 MS

Supports mix of urban & rural areas

\* European Commission (2023) *Report on the outcome of 2021-2027 cohesion policy programming*

On the left side of the slide, there are two vertical bars: a yellow one on the left and a blue one on the right, both of varying heights.

## TERRITORIAL DIMENSION IN 2021-27

Countries can **build on 2014-20 experiences:**

- strategies are often in place
- stakeholder groups and networks are established
- policymakers at national/programme level and implementers at territorial levels have experience

Many countries **expanded the number of targeted territories** - with ITIs but also CLLD

This often resulted in **widening to smaller or second-tier cities/FUAs** (e.g. CZ, PL, HR)

# STAKEHOLDER ENGAGEMENT AND STRATEGY DEVELOPMENT – EXAMPLE OF RIJEKA



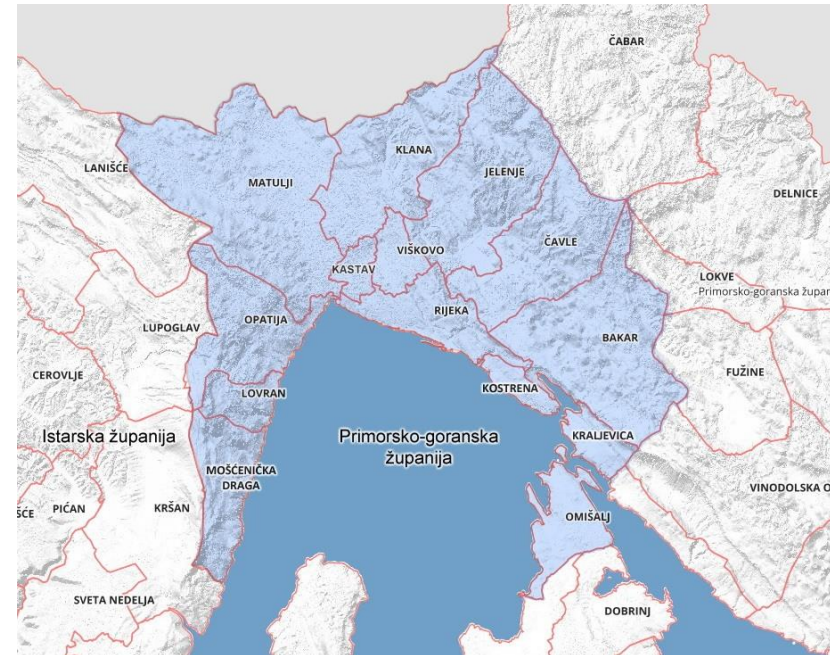
Rijeka ensured cooperation with other municipalities in its FUA via a **working group involving representatives from all municipalities.**

**Meetings with thematic workshops and site visits** rotated around the municipalities.

The diversity of the different parts of the ITI territory required **knowledge exchange so ensure shared awareness of development challenges.**

Stakeholders recognised these exchanges as one of the **main added values** of SUD ITI implementation.

Rijeka Urban Agglomeration



Source: City of Rijeka



# SECTORAL INTEGRATION: IMPLEMENTATION OF DIFFERENT FUNDS – EXAMPLE OF ROTTERDAM

In Rotterdam, the urban ITI strategy integrates support from different sectors

Focus on **education and business** in targeted territory (deprived urban areas in the city's south)

**Combining funding** from the national ESF and the regional ERDF OPs

'Urban Advisory Group' helped to **identify and exploit synergies**, including the domestic National Programme for South Rotterdam (NPRZ)



# CAPACITY BUILDING – EXAMPLE OF LUBLIN



2014-20

Lublin ITI based inter-municipal coordination on an **agreement between municipalities**

Lublin city led the process representing all municipalities **as Intermediate Body**

Many **outsourced** tasks (e.g. strategy drafting)

2021-27

Shift from agreement to **association of municipalities**

Tasks such as strategy development now carried out **‘in house’**

Lublin Metropolitan Area



Source: City of Lublin

On the left side of the slide, there are two vertical bars: a yellow one on top and a dark blue one below it.

## FACTORS INFLUENCING TERRITORIAL INSTRUMENT UPTAKE *(AND USEFULNESS?)*

**Institutional set-up of a country** (centralisation-regionalisation): e.g. alignment with broader decentralisation / devolution processes

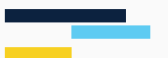
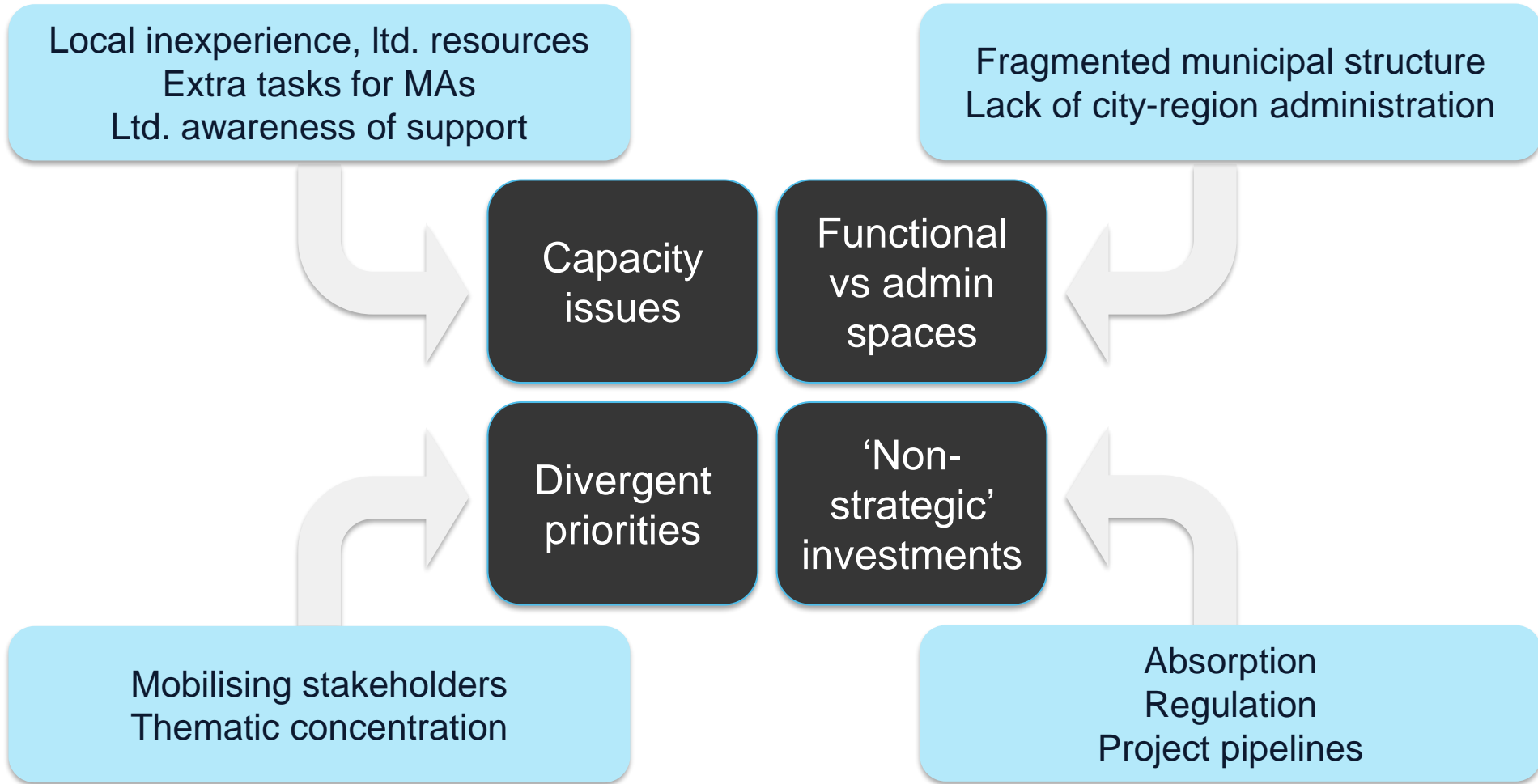
**Competences and capacities:** especially at local level, incl. trust and cooperation between levels of government

**Degree of “fit” with CP governance model:** e.g. use of regional, multi-Fund, dedicated “territorial” programmes

**Importance and scale of CP investment:** e.g. risk of fragmentation where funds are limited - “worth the effort?”

**Existing other territorially-oriented frameworks:** e.g. availability of domestic or EU-based equivalents, often well-established

# KEY CHALLENGES



On the left side of the slide, there are two vertical bars: a yellow one on the left and a dark blue one on the right, both of varying heights.

# SOME LESSONS AND CONCLUSIONS

**Territorial instruments have brought substantial added value to CP as examples of place-based policy-making:**

- local communities can identify their own priorities and projects in a territorially integrated way, scope to target functional areas, empowering local partners.

**Implementation challenges remain – especially for smaller, less experienced local authorities:**

- meeting CP regulatory requirements, spending deadlines, working across administrative/sectoral boundaries, embedding collaborative governance.

**Renewed efforts are required to increase use of territorial instruments:**

- regulatory streamlining, incentives, capacity-building, indicators to measure direct/indirect effects.

**Thank you!**

stefan.kah@strath.ac.uk



# Lunch Break

# Agenda

01

Inspirational  
speech

02

Let's put  
territoriality  
on the map

03

Territorial  
instruments  
in Cohesion  
Policy:  
experiences  
and lessons  
so far

04

**TA2030 and  
territoriality**

05

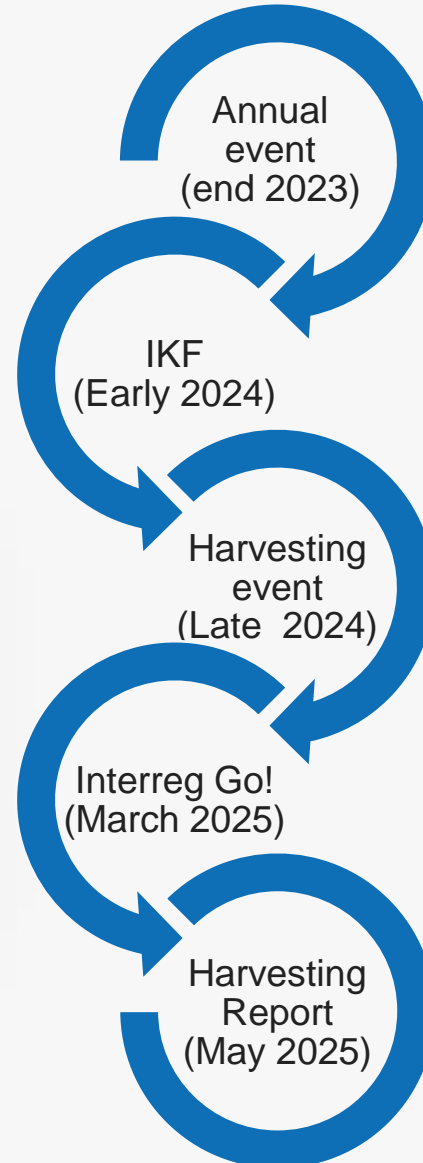
**Territoriality  
Post27**



[www.interact.eu/programme-management/post-2027/interreg-consultations](http://www.interact.eu/programme-management/post-2027/interreg-consultations)



# Territoriality Post27



Harvesting report:

- Territoriality & Territorial instruments are mentioned frequently throughout the report
- Annex to the report: Territorial instruments consultation report drafted by Interact.



Ministry of Development Funds and Regional Policy  
Republic of Poland

---

# Polish Presidency, Territoriality and the future of Territorial Agenda

Patrycja Artymowska  
Ministry of Development Funds and Regional Policy, Poland

Wiktor Szydarowski  
ESPON EGTC, Luxembourg

INTERACT  
28 June 2025, Vienna



POLAND25.EU



POLAND25.EU

# PREVIOUS AND CURRENT WORKS

## Documents, papers and discussions:

- ESPON Stocktaking Review of the Territorial Agenda 2030
- Issue Paper on strengthening territorial dimension in EU policies
- Issue Paper on support for sustainable urban development in functional areas
- Issue Paper on the future of cohesion and territorial approaches in the evolving European Union
- ESPON report on Territorial Exaptive Resilience along EU Eastern Borders
- ESPON stocktaking paper on functional urban areas
- MS and territorial and urban stakeholders input during the meetings

## Meetings

- Expert meeting (Gdansk) 27-28.02.2025
- TAWG (on-line), 18.2
- UATPG (on-line) 26.2 and 16.04.2025
- TAWG PLUS and UDG (on-line) 2-3.04.2025
- NTCCP and UDG (Bydgoszcz) 12-13.03.2025
- DG TC and DG UM (Warsaw) 24-25.04.2025



**WARSAW JOINT DECLARATION**  
adopted by Ministers responsible  
for Cohesion Policy, Territorial Cohesion and Urban Matters  
(the IMM on 21 May 2025)



# The main points of the Declaration regarding territoriality

1. **Territorially sensitive responses** to address uneven territorial impacts of global challenges.
2. Territorial cohesion to be **promoted together** with new priorities such as security, resilience, green and digital transitions.
3. EU policies to follow a **place-based approach**, and apply principles of **multi-level governance, partnership, and shared management**.
4. A need to develop an evidence-based EU **territorial development vision**, co-created by the European Commission and Member States, to tackle territorial disparities and guide policy.
5. **TIAs** to be used in EU policies and legislation, to avoid exacerbating **disparities** and to better tailor actions to **territorial contexts**.
6. Attention to **vulnerable regions** (covered by Articles 174 and 349 of the TFEU; affected by migration, climate risks, or conflict-related pressures, particularly bordering Russia, Belarus, and Ukraine).
7. **Urban-rural linkages** and **spatial planning** to be enhanced to promote sustainable development.
8. **Housing challenges** to be addressed territorially, ensuring **carbon-neutral, affordable housing** integrated with broader urban and rural development strategies.
9. **ETC** to be strengthened to enhance functional links and integration across regions and with partner/candidate countries.



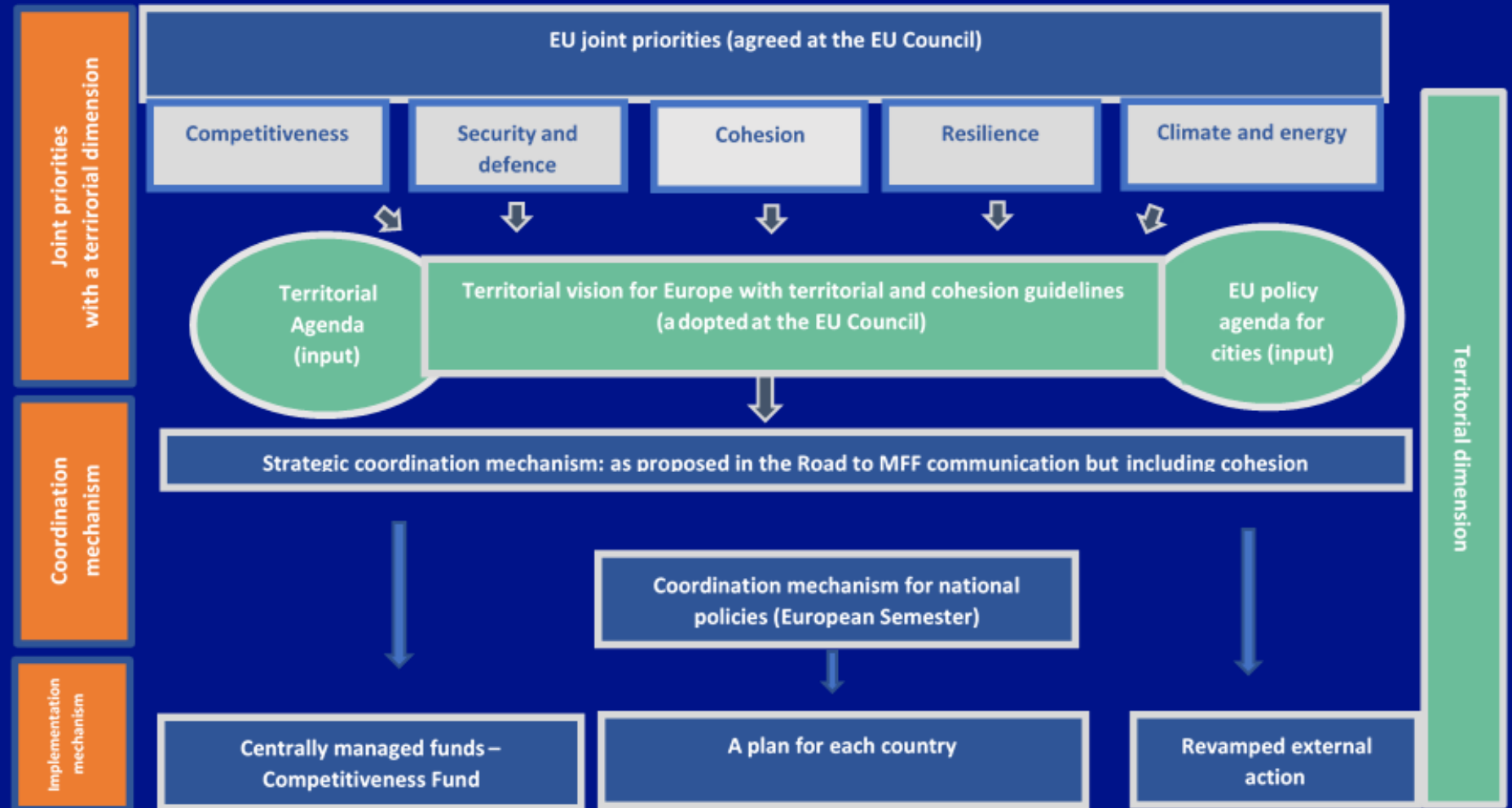
# A vision of territorial development of Europe

- Acting as a **reference point** for all EU policies (to be adopted by the Council and possibly the EP)?
- Identifying:
  - **strategic issues** requiring common European, national and subnational responses, incl. territorial effects of new EU wide challenges and sectoral policies
  - **strategic EU territorial and cohesion goals** as a reference point for EU-wide policies and instruments (like Competitiveness Fund)
- Enabling measurable cohesion/territorial **objectives** to be achieved at European level and identifying territories in need of an EU-wide action (not just based on GDP per capita indicators and not just for cohesion policy!)
- Followed by a **shared understanding** of how to promote cohesion and territorial development while focusing on joint EU priorities



POLAND25.EU

# Territorial vision for Europe in the territorially sensitive system of EU policies



# From ESDP to the Territorial Agenda 2030



#TerritorialAgenda  
A future for all places

# Territorial Agenda 2030

**Territorial Agenda 2030**  
A future for all places



**#TerritorialAgenda**  
A future for all places

Informal meeting of Ministers responsible for  
spatial planning, territorial development and/or  
territorial cohesion  
1 December 2020, Germany



- An action-oriented framework to promote territorial cohesion in Europe.
- Orientation document for strategic spatial planning (?)
- Set of objectives/priorities put in the light of the challenges and policy debates as of late 2020
- More focus on implementation, communication and governance
- Stocktaking review foreseen in 2024

**#TerritorialAgenda**  
A future for all places

# Putting TA2030 in practice

- **TA2030 priorities and principles expected to be taken on board in the development strategies and policies, incl. sector policies**
- **Call on decision makers and authorities in Member States, regions, metropolitan areas, cities, towns, municipalities, rural areas and other places to contribute to inclusive and sustainable futures for all places and people.**
- **Cooperation between territories among the tools to put priorities into action.**
- **Sub-national authorities and bodies encouraged to cooperate with neighbouring territories and places facing similar or complementary potential or challenges.**

## A Just Europe



that offers future perspectives for all places and people

### Balanced Europe

Better balanced territorial development utilising Europe's diversity

### Functional Regions

Convergent local and regional development, less inequality between places

### Integration Beyond Borders

Easier living and working across national borders

## A Green Europe



that protects common livelihoods and shapes societal transition

### Healthy Environment

Better ecological livelihoods, climate-neutral and resilient towns, cities and

### Circular Economy

Strong and sustainable local economies in a globalised world

### Sustainable Connections

Sustainable digital and physical connectivity of places

## TA 2030 PILOT ACTIONS

- Aimed to showcase, test and develop practices strengthening the territorial dimension
- Adhering to TA2030 priorities
- Involving different administrative levels
- Flexible in focus and character

# The portfolio of pilot actions

#TerritorialAgenda

**Balanced Europe:** Better balanced territorial development utilising Europe's diversity

**A future for lagging regions: Fostering the implementation of spatial strategies**

**Lead stakeholder:** Federal Institute for Research on Building, Urban Affairs and Spatial Development, Germany

## New TA 2030 pilot actions:

- **"Circular Rural Regions"**, Federal Ministry for Housing, Urban Development and Building, Germany
- **"Integral Regulatory TIA"**, Ministry of Interior and Kingdom Relations, The Netherlands
- **"Urbanisation strategies for transregional or transnational valleys facing climate change"**, Public Service of Wallonia, Spatial and Urban Planning Department, Belgium

#TerritorialAgenda

**Balanced Europe:** Better balanced territorial development utilising Europe's diversity

**Small places matter: Understanding how small places can boost their role for the development of a wider territory**

**Functional regions:** Convergent local and regional development, less inequality between places

**Lead stakeholder:** Ministry of Local Government and Modernisation, Norway

#TerritorialAgenda

**Functional regions:** Convergent local and regional development, less inequality between places

**Climate change adaptation and resilience through landscape transition**

**Healthy environment:** Better ecological livelihoods and climate-neutral and resilient towns, cities and regions

**Lead stakeholder:** Ministry of Environment and Climate Action, Portugal

Blodesign, 2020

#TerritorialAgenda

**Integration beyond borders:** Easier living and working across national borders

**Cross-border spatial planning: A vision for a zero-carbon cross-border functional region**

**Healthy environment:** Better ecological livelihoods and climate-neutral and resilient towns, cities and regions

**Functional regions:** Convergent local and regional development, less inequality between places

**Lead stakeholder:** Ministry of Energy and Spatial Planning, Luxembourg

© SIP / YW, tous droits réservés (all rights reserved)

#TerritorialAgenda

**Healthy environment:** Better ecological livelihoods and climate-neutral and resilient towns, cities and regions

**Climate action in Alpine towns**

**Functional regions:** Convergent local and regional development, less inequality between places

**Lead stakeholder:** Federal Office for Spatial Development (ARE) & Alpine Convention, Switzerland

© David Schweizer

#TerritorialAgenda

**Balanced Europe:** Better balanced territorial development utilising Europe's diversity

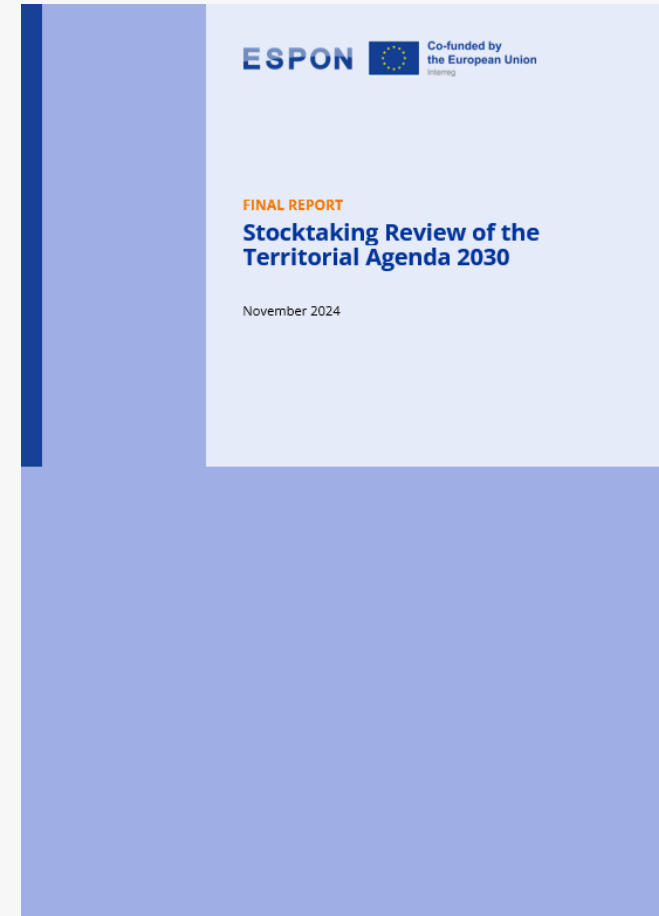
**Region-focused Territorial Impact Assessment**

**Integration beyond borders:** Easier living and working across national borders

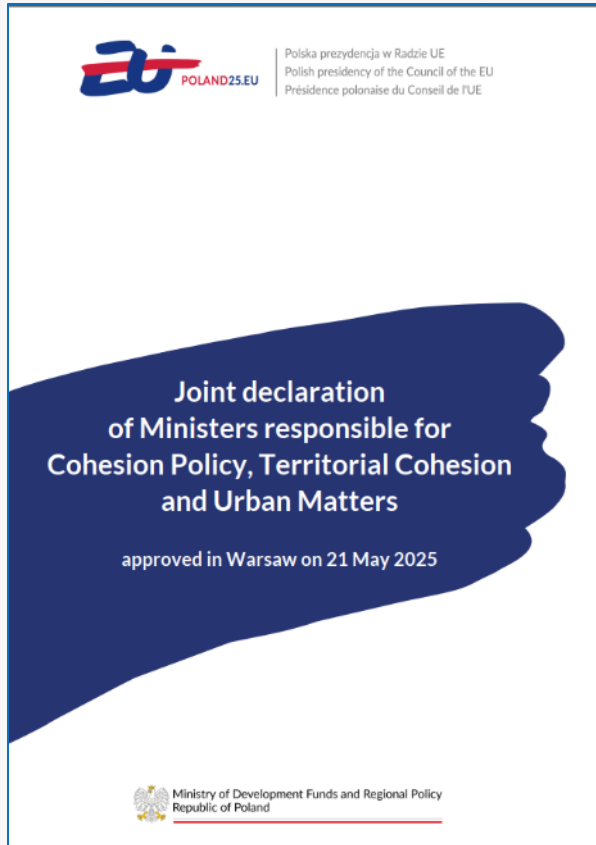
**Lead stakeholder:** Ministry of Development Funds and Regional Policy, Poland

# Setting the Territorial Agenda trajectory (1)

- Priorities and principles are widely used but ‘invisibly’ for TA2030 (no direct references)
- Pilot actions are appreciated as low-level policy labs
- Substantial room for improvement of the governance structures; more ownership needed from key players with links to ongoing EU policy agendas
- Next TA advised to be more outspoken, focused and with a shared sense of direction
- Could it provide a **territorial stepping stone** for broader debate on a shared vision for Europe and a reference point for proposed EU actions?



# Setting the Territorial Agenda trajectory (2)



- **ADVANCE** the implementation of Territorial Agenda principles in policy development and governance to strengthen the place-based approach
- **INITIATE** the renewal of the Territorial Agenda 2030 to make it a tool to support the delivery of the European territorial development vision
- **APPROACH ESPON** to organise a foresight study, to provide the evidence base for the territorial development vision, including at urban scale, analyse the risks of territorially blind policies and illustrate their potential consequences if spatial considerations are not adequately integrated into the EU policymaking

# Reflection process ahead...

- Interplay of a territorial vision, the TA2030 and the foresight study
- Defending/enhancing cohesion as the core value through a territorial approach
- Better **spatial awareness**: cost of territorial blindness of EU policies; what scenarios, what consequences?
- Vigorous communication of the **territorial principles** in Interreg programmes; sector policies, etc.
- Wider use of TIAs
- **Spatial planning solutions** to mitigate inter-sectoral frictions





POLAND25.EU

# ESPON WEEK TWO-DAY SEMINAR ON “EXAPTIVE RESILIENCE IN BORDER REGIONS”

25–26 June 2025  
Gdańsk

Meeting level: European regional and local decision-makers as well as researchers and experts

## OBJECTIVES:

- to share ESPON research findings
- to hold a debate on building the resilience of different types of territories including those along the EU’s eastern border
- to discuss how regions use their own resources in innovative ways to increase their resilience in the face of challenges and crises





Polska prezydencja w Radzie UE

Polish presidency of the Council of the EU

Présidence polonaise du Conseil de l'UE



Bundesinstitut  
für Bau-, Stadt- und  
Raumforschung

im Bundesamt für Bauwesen  
und Raumordnung



# CIRCULAR RURAL REGIONS

STATE OF PLAY – GERMAN TA2030 PILOT ACTION



Circular  
Rural Regions

# WHY CIRCULAR RURAL REGIONS?



Bundesinstitut  
für Bau-, Stadt- und  
Raumforschung

im Bundesamt für Bauwesen  
und Raumordnung



Six priorities of the Territorial Agenda2030 © BBSR



# TEN CIRCULAR RURAL REGIONS

## FINLAND-ESTONIA-GERMANY-AUSTRIA-SWITZERLAND-CROATIA



Bundesinstitut  
für Bau-, Stadt- und  
Raumforschung

im Bundesamt für Bauwesen  
und Raumordnung

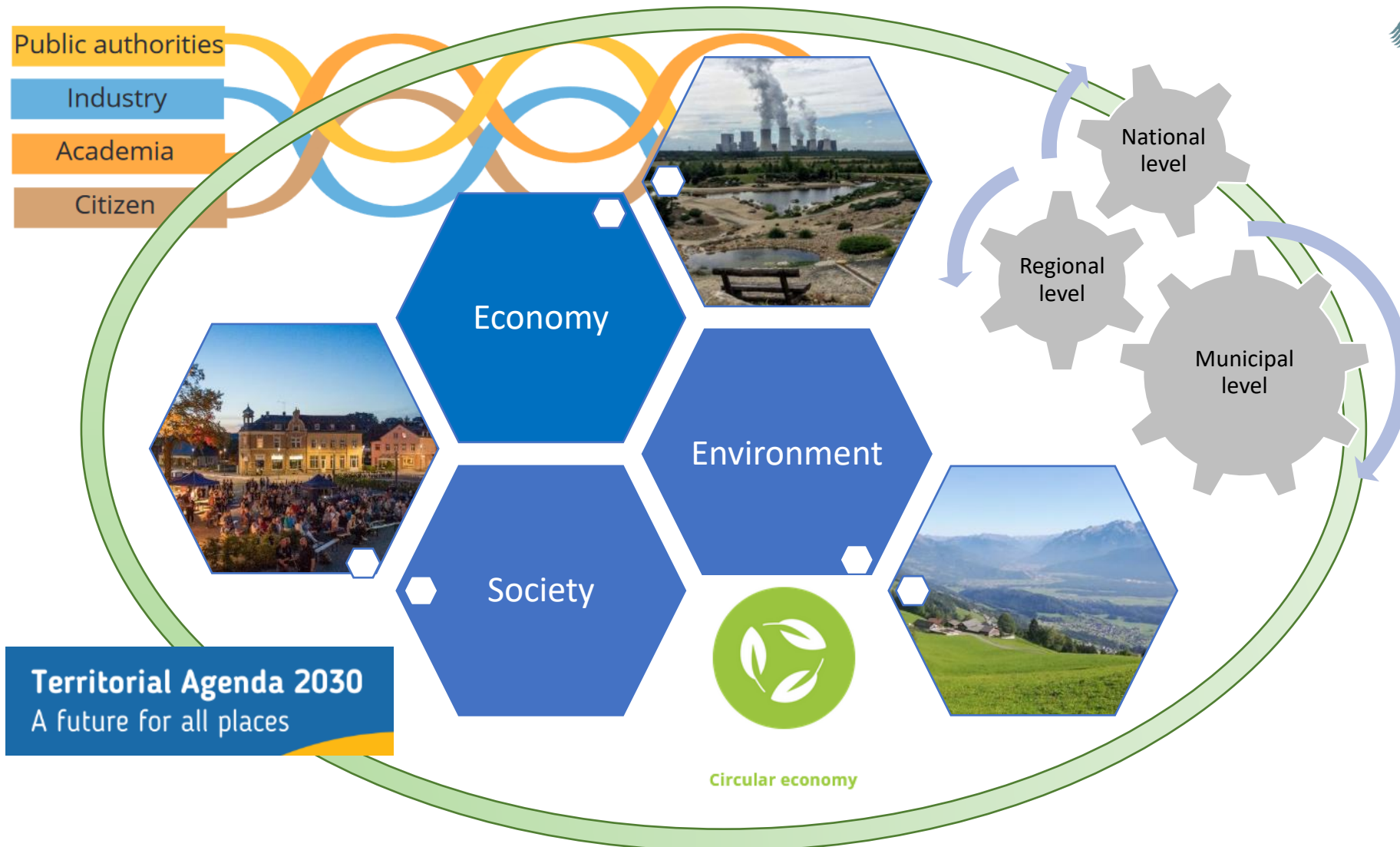


# CIRCULAR ECONOMY NEEDS MANY ACTORS, LEVELS AND SECTORS



Bundesinstitut  
für Bau-, Stadt- und  
Raumforschung

im Bundesamt für Bauwesen  
und Raumordnung



# Coffee Break

# Panel discussion

- Karolina Jasinska- Meuhleck (European Commission)
- Wiktor Szydarowski (Interreg ESPON)
- Monika Schoenerklee-Grasser (Interreg CE),
- Desislava Tencheva (Interreg IPA BG-RS, BG-TR, BG-MK)

# Upcoming events

- Interreg Knowledge Fair, 4-5 November 2025, Belgrade
- Exchange on PO5, November 2025, Bulgaria
- TN programmes' contribution to MRS/SBS during Strategies Days, 24 Sept 2025, Brussels
- EUSBSR priority area coordinators and BSR Interreg programmes network, end of Oct. 2025

# Thank you for being here!

Your opinion matters to us.

Please take a few minutes to provide us with feedback to help us improve our services.



# Cooperation works

**All materials will be available on:**

[Interact library / Territoriality](#)